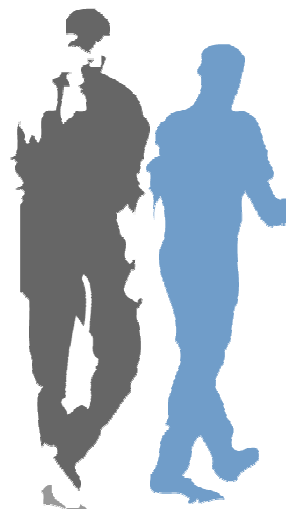


# Milestone XProtect Smart Client Step-by-Step Guide

## Exporting **Database Evidence** in the Milestone XProtect Smart Client

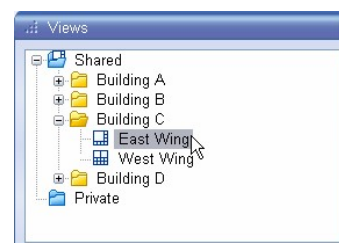


With the *Smart Client* you are able to quickly export video evidence in different formats. This guide describes how to export evidence in the Milestone XProtect database format.

**Note:** Depending on your user rights, access to exporting database evidence from particular cameras may be restricted.

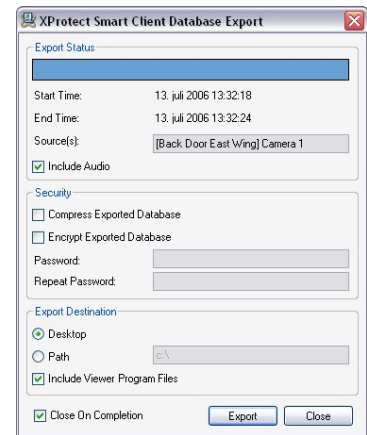
To export video evidence in the Milestone XProtect database format, do the following:

1. Select the *Smart Client's Browse* tab.
2. In the *Browse* tab's *Views* section, select a view which contains images from the required camera(s).
3. Use the *Browse* tab's *Time Navigation* section to navigate to the beginning of the time span you want to cover by the export.
4. When you are looking at the first image you want to include in the export, go to the *Browse* tab's *Export* section and click the upper of the two *Set* buttons. This will set the starting point of the export.
5. Now use the *Time Navigation* section to navigate to the end of the time span to be covered by the export. When you are looking at the last image you want to include in the export, go to the *Browse* tab's *Export* section and click the lower of the two *Set* buttons. This will set the end point of the export.
6. Select the required source in the *Export* section's *Source* list. You may select an individual camera, in which case only images from the selected camera will be included in the export, or *Current View Sources*, in which case the export will include images from all cameras (for which you have database export rights) in the current view.
7. Click the *Database Export...* button. This will open a separate database export dialog. The dialog will list the specified start time, end time and camera(s).



8. If you want to compress the exported database, select the *Compress Exported Database* check box. Compression can reduce the size of the exported database by approximately 10%. However, the database export process will take considerably longer when compression is used.
9. If you want to encrypt the exported database, select the *Encrypt Exported Database* check box. If you select encryption, specify a password to be used for decrypting the exported database content when opening it. Remember to send the password to the recipient *separately*.

Generally, encryption is highly recommended. Note, however, that when encryption is used, the database export process as well as subsequent opening of the database in order to view its content will take considerably longer than without encryption.



10. Select required export destination:

- **Desktop:** If you select *Desktop*, your exported file will be saved in an automatically created *Exported Images* folder on the desktop of your computer.
- **Path:** If you select *Path*, you are able to specify a path yourself. The exported file will be saved in an automatically created *Exported Images* folder under the path you specify. Example: If you specify a path like C:\My Stuff\My Files, the exported file will be saved in C:\My Stuff\My Files\Exported Images.

11. If you want to include a stand-alone version of Milestone XProtect's *Viewer* application in the database export, select the *Include Viewer Program Files* check box. Generally, this is highly recommended: If you include the *Viewer* in the export, the exported database(s) can be viewed on any PC—no additional Milestone XProtect software will be required.

**Tip:** A *Viewer* included in a database export will, if possible, match the language version of your *Smart Client*. If the *Viewer* is not available in a matching language version, an English language version of the *Viewer* will be included.

12. Click the *Export* button to begin the export. The status bar in the upper part of the export dialog will display the status of the export.



If the *Close On Completion* check box is selected (it is by default), the export dialog will automatically close when the export is finished. Upon completion, you are able to distribute the content of the *Exported Database* folder.

**Tip:** If you are exporting very large amounts of database content, export may take a while. You can continue to use the *Smart Client* for other purposes while the export process is underway.

**Tip:** If you included the *Viewer* application in the export, double-clicking the file *Browser.exe* in the *Exported Images* folder will open the *Viewer*, ready for viewing and browsing the exported database content.

**Tip:** Going to distribute the exported database content on a CD or DVD? If you included the *Viewer* application in your export, copying all files from the *Exported Images* folder to the root of a CD or DVD will make the CD/DVD start automatically when the recipient inserts it.

Export in the database format provides a much higher degree of security than export in the AVI or JPEG formats: The database structure cannot be read by general-purpose database applications. This makes attempts at altering the database content extremely complicated, as the format and storage location of the video needs to be found, decoded, altered, re-encoded, and put back in the same place to retain the database structure. You can furthermore encrypt and password-protect the exported database content. The exported database content can still be viewed on any PC if including a stand-alone version of Milestone XProtect's *Viewer* application in the database export.