

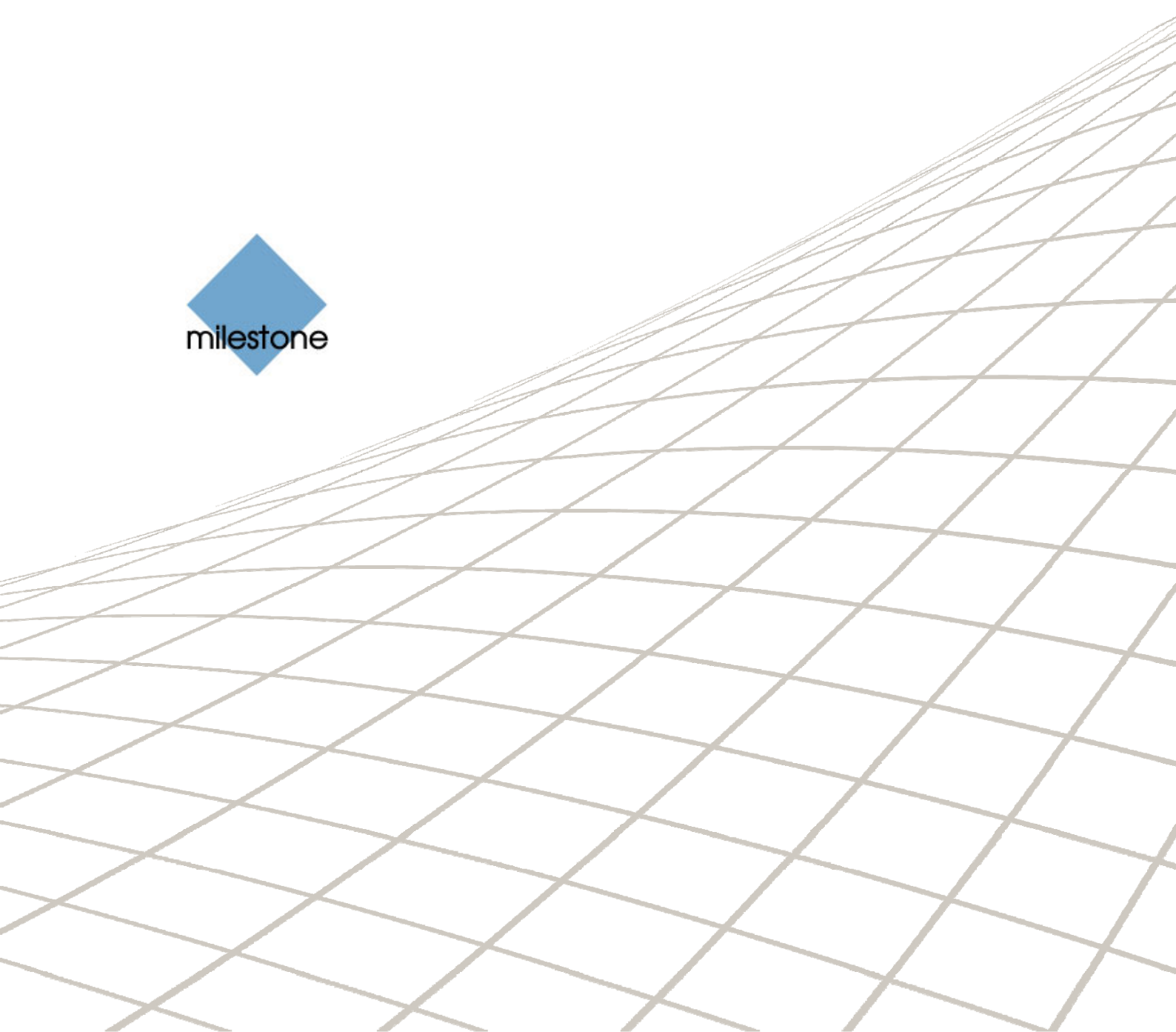


# Milestone XProtect™

**Essential 1.0**

**30-DAY TRIAL VERSION**

Getting Started Guide for  
System Administrators





# Contents

---

<b>ABOUT THE TRIAL VERSION .....</b>	<b>4</b>
<b>What is XProtect Essential? .....</b>	<b>4</b>
<b>System Requirements.....</b>	<b>4</b>
<b>Limitations in Trial Version .....</b>	<b>5</b>
<b>INSTALLATION .....</b>	<b>6</b>
<b>ADDING CAMERAS TO YOUR SYSTEM .....</b>	<b>7</b>
<b>Prerequisites .....</b>	<b>7</b>
<b>Wizards Help You Add Hardware Devices ... ..</b>	<b>8</b>
<b>... and Configure Cameras and Users .....</b>	<b>8</b>
<b>ADVANCED CONFIGURATION OVERVIEW .....</b>	<b>10</b>
<b>Cameras .....</b>	<b>10</b>
<b>Event and Output Configuration.....</b>	<b>11</b>
<b>Scheduling.....</b>	<b>11</b>
<b>Archiving .....</b>	<b>12</b>
<b>Client Access, Users and Rights .....</b>	<b>12</b>
<b>GETTING A CLIENT .....</b>	<b>14</b>
<b>UPGRADING TO A FULL VERSION .....</b>	<b>15</b>



### **Copyright**

© 2010 Milestone Systems A/S.

### **Trademarks**

XProtect is a registered trademark of Milestone Systems A/S. Microsoft and Windows are registered trademarks of Microsoft Corporation. All other trademarks mentioned in this document are trademarks of their respective owners.

### **Disclaimer**

This document is intended for general information purposes only, and due care has been taken in its preparation. Any risk arising from the use of this information rests with the recipient, and nothing herein should be construed as constituting any kind of warranty. Milestone Systems A/S reserve the right to make adjustments without prior notification. All names of people and organizations used in this document's examples are fictitious. Any resemblance to any actual organization or person, living or dead, is purely coincidental and unintended.

XPES10-TRIAL-gsg-1-260510



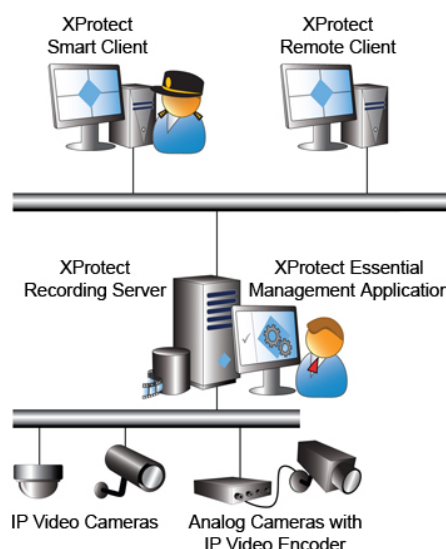
## About the Trial Version

**This guide is aimed at users of the Milestone XProtect Essential 30-day trial version only.** It briefly explains how to install the XProtect Essential trial version, and how to configure some of its key features. For more detailed feature descriptions, refer to the manuals available on the Milestone Systems website, [www.milestonesys.com](http://www.milestonesys.com). XProtect Essential furthermore features a very comprehensive built-in help system: When you have installed XProtect Essential, simply use the Management Application's *Help* menu or pres F1 on your keyboard to access the help system.

### What is XProtect Essential?

XProtect Essential is a single-server video management system (VMS) managing up to 26 cameras per server, including full-featured remote access. Designed with all the basic features required for smaller implementations, it is an inexpensive entry-level product. Easy-to-use clients provide intuitive operator viewing and control of connected cameras.

Easy to install and manage, XProtect Essential's consolidated single-management interface provides a coherent overview of devices, recordings and user settings. Straightforward installation wizards, swift automatic device discovery, and the intuitive user interface make XProtect Essential easy to deploy. Configuration wizards and intuitive dynamic administration significantly reduces the time and costs of video surveillance management and provide maximum usability.



### System Requirements

The following are *minimum* system requirements for the server running the XProtect Essential server software:

<b>Operating System</b>	Microsoft® Windows® XP Professional (32 bit or 64 bit*), Windows Server 2003 (32 bit or 64 bit*), Windows Server 2008 R1/R2 (32 bit or 64 bit*), Windows Vista™ Business (32 bit or 64 bit*), Windows Vista Enterprise (32 bit or 64 bit*), Windows Vista Ultimate (32 bit or 64 bit*), Windows 7 Professional (32 bit or 64 bit*), Windows 7 Enterprise (32 bit or 64 bit*) and Windows 7 Ultimate (32 bit or 64 bit*). * Running as a 32 bit service/application.
<b>CPU</b>	Intel® Pentium® 4, 2.4 GHz or higher (Core™ 2 recommended).
<b>RAM</b>	Minimum 1 GB (2 GB or more recommended).
<b>Network</b>	Ethernet (1 Gbit recommended).
<b>Graphics Adapter</b>	AGP or PCI-Express, minimum 1024×768, 16 bit colors.
<b>Hard Disk Type</b>	E-IDE, PATA, SATA, SCSI, SAS (7200 rpm or faster).
<b>Hard Disk Space</b>	Minimum 1 GB free hard disk space available, excluding space needed for recordings.



## Software

Microsoft .NET 3.5 Framework Service Pack 1 or newer.  
DirectX 9.0 or newer required if wishing to run the Viewer application.  
Windows Help (WinHlp32.exe).  
All are downloadable from <http://www.microsoft.com/downloads/>.

System requirements for clients, etc. are available in the separate manuals describing these applications. You find the manuals on [www.milestonesys.com](http://www.milestonesys.com).

## *Limitations in Trial Version*

Compared with a full version of XProtect Essential, the trial version has the following limitations:

- The trial version is valid for 30 days only. After the 30-day trial period, you will not be able to use the trial version. You will, however, still be able to upgrade the trial version to a full version.
- You are able to view and record video from a maximum of four cameras at a time. A full version allows simultaneous viewing and recording from 26 cameras per server.

**Tip:** Just like in a full version, you are allowed to add an unlimited number of cameras to your trial system, so you can easily test more than four cameras on your trial system—provided you only view live video from a maximum of four cameras at a time.

- The total amount of recordings you can store is limited to one day (24 hours), regardless whether the recordings are stored in XProtect Essential's regular databases or in archives. A full version lets you keep recordings for as long as required, limited only by the available hardware storage capacity.
- No Device License Keys are required for the cameras and/or video encoders you add to your trial system. A full version requires a Device License Key (DLK) for each camera and/or video encoder you add. The Device License Keys allow you to run the cameras and/or video encoders with your full version. You get Device License Keys from your Milestone vendor or straight from [www.milestonesys.com](http://www.milestonesys.com).

Should you want to upgrade your trial version to a full version, you can easily do so at any time during or after the 30-day trial period. See *Upgrading to a Full Version* on page 15.



# Installation

---

Before installation, shut down any existing Milestone software.

- If you **have a software DVD**: Insert the XProtect Essential software DVD, wait for a short while, select required language, then click the XProtect Essential installation link.
- If you **downloaded the software**: Run the downloaded installation file from the location you have saved it to
- Depending on your security settings, you may receive one or more security warnings. When this is the case, click the *Run* button.
- When the installation wizard starts, click *Next* to continue.
- Read and accept the End User License Agreement, then click *Next*.
- Select *Typical* installation.
- Select the *Install 30 days trial* option, specify your user name and organization, and click *Next*.
- Click the *Install* button to begin the software installation. During the process, all the necessary components will be installed one after the other.
- Click *Finish* on the last step to complete the installation. The computer on which you performed the installation now works as an XProtect Essential server.

A Smart Client for viewing live and recorded video is automatically installed on the XProtect Essential server.

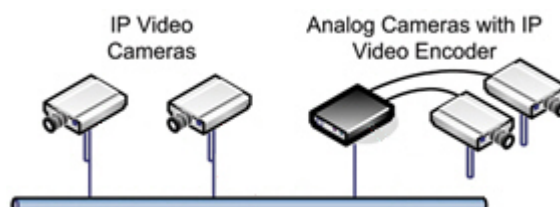
For descriptions of how to install XProtect Essential's other associated applications, for example the XProtect Smart Client, refer to XProtect Essential's built-in help system or the manuals available on [www.milestonesys.com](http://www.milestonesys.com).



## Adding Cameras to Your System

In XProtect Essential you technically do not add cameras; rather you add hardware devices. This is because hardware devices have their own IP addresses or hostnames on your network. XProtect Essential uses the IP addresses or hostnames to identify units on the surveillance system.

In most cases, the camera and the hardware device is the same physical unit. There are, however, hardware devices to which you can connect several cameras. This is typically the case with video encoders (also known as video servers), which are used for connecting analog cameras to IP networks.



You need to know the IP addresses or hostnames of the hardware devices you want to add to your trial system. Ask your network administrator if in doubt. You can of course configure and use each camera individually, even when several cameras are attached to a single hardware device and thus share the same IP address or hostname.

### Prerequisites

Before adding a hardware device to XProtect Essential, make sure the hardware device is supported by XProtect Essential, and that its IP address or hostname, administrator password, etc. have been configured on the device itself as described by the manufacturer.

- To verify whether a hardware device is supported, look at *Support > Questions & Answers > Supported Hardware* on the Milestone website, [www.milestonesys.com](http://www.milestonesys.com).
- Also make sure you have the latest XProtect device drivers. Device drivers are tiny pieces of software which make hardware devices work with Milestone XProtect systems. You automatically get a large collection of device drivers when you install XProtect Essential, but a newer collection—a so-called Device Pack—may be available:

To see which Device Pack version you got during your XProtect Essential installation, go to Windows' *Start* menu, and select *Settings > Control Panel > Add or Remove Programs*. On the list of currently installed programs, locate *Video Device Pack* and see which version number is listed after the name (e.g. *Video Device Pack V4.7*). Now go to the Milestone Systems website, [www.milestonesys.com](http://www.milestonesys.com), and look at *Support > Downloads* to see if a later XProtect Device Pack version is available. If it is, make sure you download and install it on your XProtect Essential server.

**Tip:** On [www.milestonesys.com](http://www.milestonesys.com) you can also find release notes for each device pack. The release notes contain useful information. For example, they will tell you if a special administrator account must be configured on the hardware device before you can add the hardware device to XProtect Essential (see also the next prerequisite).

- Finally, when you add a hardware device to your XProtect Essential system, you must in most cases specify the password for the hardware device's administrator account. That account gives full access to the device, and XProtect Essential is going to need that. A hardware device's administrator password is typically specified when you initially set up the hardware device on your network, using the hardware device's own web page. Make sure you know the password for the administrator account of each hardware device you require on your trial system.

**Tip:** Have you previously used a web page to connect to a camera on your network? While you did this, were you also able to configure the cameras' settings (such as resolution, etc.)? If you

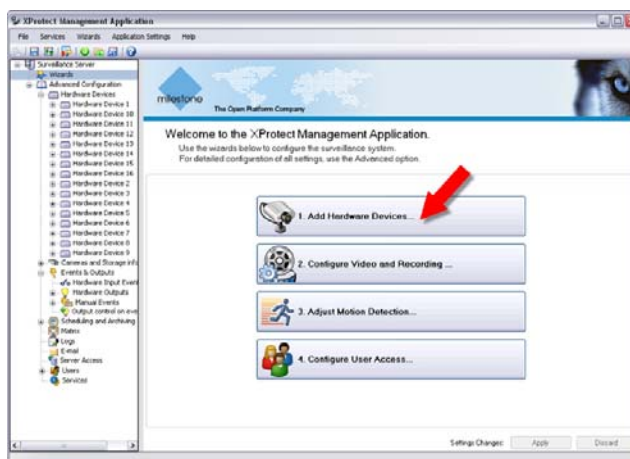


can answer yes to both questions, you were in all likelihood using the hardware device's administrator account, in which case you will also know the password.

## ***Wizards Help You Add Hardware Devices ...***

When you are ready, do the following to add devices to your XProtect Essential trial system:

- Open XProtect Essential's Management Application, either from Windows' *Start* menu or by double-clicking the *Management Application* shortcut on your desktop.
- In the Management Application, click the *Add Hardware Devices...* button.
- A wizard now offers you four ways of adding hardware devices:



**Express (recommended):** Quickly scans your network for devices, and helps you quickly add them to your system. This method is quick and easy since it only scans for devices supporting device discovery, and only on the part of your network (subnet) where the XProtect Essential server itself is located. Device discovery is a method with which hardware devices make information about themselves available on the network. Based on such information, XProtect Essential can recognize relevant hardware devices on your network, and thus include cameras—but not printers and other irrelevant devices—in the scan. To use the Express method, your XProtect Essential server and your cameras must be on the same layer 2 network; that is a network where all servers, cameras, etc. can communicate without the need for a router.

**Advanced:** Scans your network for hardware devices based on your specifications regarding required IP address ranges, discovery methods, drivers, and hardware device's user names and passwords.

**Manual:** Lets you specify details about each hardware device separately. A good choice if you only want to add a few hardware devices, and you know their IP addresses, required user names and passwords, etc.

**Import from CSV file:** Lets you import data about cameras as comma-separated values from a file; an effective method if setting up several similar systems.

Just like in a full version, you are allowed to add an unlimited number of cameras to your trial system, but remember that in the trial version you can only view and record video from a maximum of four cameras at a time. You can, however, easily test more than four cameras on your trial system—provided you only view live video from a maximum of four cameras at a time.

## ***... and Configure Cameras and Users***

When you have added cameras, use XProtect Essential's other wizards to **configure video and recording**, **adjust motion detection**, and **configure user access**. Note that those wizards only cover a selection of frequently used functionality, not every configuration option. For example, the Configure User Access wizard only lets you set up users with access to *all* cameras. This means that the users you add through the wizard will be able to view video from all cameras on your trial



system (max. four at a time, since you can only view four cameras at a time in a trial version). This is ideal if your trial setup only involves a small number of trusted users, but if you want to specify different feature and camera rights for each user, you must use advanced configuration.

On the following pages we will therefore take a quick look at some of the advanced configuration options. Advanced configuration of client access, users, and their rights is covered on page 12.



# Advanced Configuration Overview

---

## Cameras



Camera settings are configurable on a general and on a camera-specific level.

On the **general level**, you can specify video, recording and shared settings (such as dynamic archiving paths and whether audio should be recorded or not) for all your cameras:

1. In the Management Application's navigation pane, expand *Advanced Configuration*, right-click *Cameras and Storage Information*, and select *Properties*.
2. Specify properties for, for example, Recording & Archiving Paths, Frame Rate, or Audio Recording. When ready, click *OK*.
3. Save your configuration changes by clicking the *Save Configuration* button in the Management Application's toolbar.

On the **camera-specific level**, you can configure video, recording and other features (such as event notification, PTZ preset positions, and fisheye view areas) for each individual camera.

1. In the Management Application's navigation pane, expand *Advanced Configuration*, and expand *Cameras and Storage Information*.
2. Right-click the required camera, and select *Properties*.
3. Specify properties as required for:
  - Camera name
  - Frame rate
  - Video quality (such as format, resolution, compression, etc.)
  - Audio (associated microphones)
  - Recording (when and how)
  - Recording & archiving paths (where to store recordings)
  - Event notification (notify clients when specific events occur)
  - Output (associate the camera with output like sirens, lights, gates, etc.)
  - Motion Detection (a key element in XProtect Essential, as detected motion may be used for determining when to start recording, when to generate alerts, etc.)

And, if applicable,


- Fisheye (for cameras delivering 360° panoramic images)
  - Settings for PTZ (Pan/Tilt/Zoom) cameras (presets and PTZ on event); see also the following.
4. Save your configuration changes by clicking the *Save Configuration* button in the Management Application's toolbar.



## PTZ Cameras

PTZ (Pan/Tilt/Zoom) cameras are supported throughout XProtect Essential. Such cameras can be operated manually as well as automatically.



PTZ cameras have a  symbol next to them when listed in the Management Application's navigation pane.

Analog PTZ cameras attached to video encoders can also be used. However, they require more initial configuration: In the Management Application's navigation pane, expand *Advanced Configuration*, expand *Hardware Devices*, double-click the required video encoder device, and select *PTZ device* to set up the video encoder for use with PTZ cameras.

Check the device pack release notes available on [www.milestonesys.com](http://www.milestonesys.com) to see exactly which PTZ features are supported for the hardware devices used on your trial system.

## Event and Output Configuration

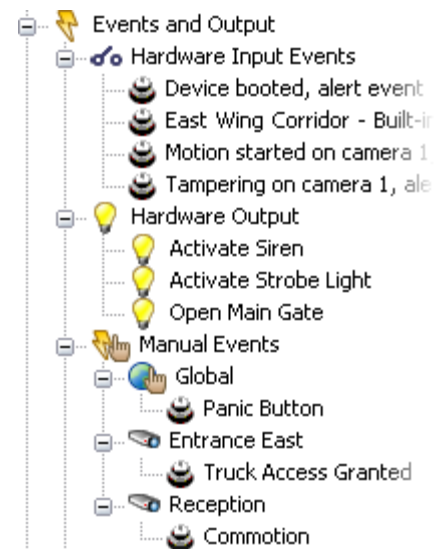
**Hardware input events** (based on input from, for example, door sensors attached to XProtect Essential's hardware devices), **manual events** (triggered manually by users) and **timer events** (occurring a specified number of seconds or minutes after another event) can be used for automatically starting/stopping recordings, creating alerts, etc.

**Hardware output** can be used for activating external units, such as sirens, lights, gates, etc. Hardware output can be triggered automatically by events.

The use of most hardware input events and all types of output requires that external sensors are wired to input/output (I/O) connectors on the hardware devices in question, and that I/O operation on the hardware devices is supported by XProtect Essential. Check the device pack release notes available on [www.milestonesys.com](http://www.milestonesys.com) to see if I/O operation is supported for the hardware devices used on your trial system.

To configure events and output: In the Management Application's navigation pane, expand *Advanced Configuration*, expand *Events and Output*, right-click the required type of event or output, and select *Add New ...*

Once configured, events can be used with features throughout XProtect Essential, regardless of where sensors are physically connected.

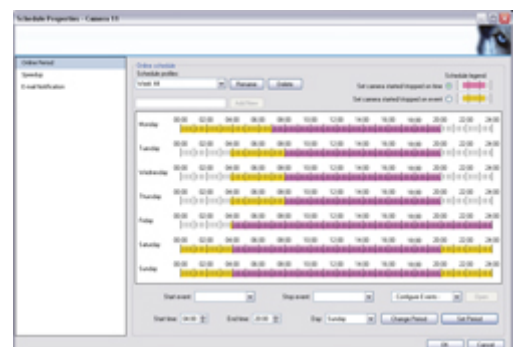


## Scheduling

XProtect Essential's scheduling feature makes sure camera and alert activity is enabled in accordance with defined periods of time.

With the system's default settings, added cameras are automatically online at all times, and you will only need to modify scheduling settings if you require cameras to be online at specific times, on specific events, or if you want to enable certain alerts.

To configure scheduling on a per-camera basis: In the Management Application's navigation pane, expand *Advanced Configuration*, expand *Scheduling and Archiving*, right-click the required camera, and select *Properties ...*





## Archiving

Archiving is the automatic transfer of recordings from cameras' databases on the XProtect Essential server to another location. This way, the amount of recordings you are able to store will not be limited by the maximum size of the databases. Archiving also makes it possible to secure your recordings on backup media of your choice.

XProtect Essential automatically archives recordings if a camera's database becomes full (in earlier versions, this was an option configured individually for each camera). You are furthermore able to schedule archiving at particular points in time every day. This way, you can proactively archive recordings, so databases will never become full.

In a full version, the archiving feature enables recordings to be kept for as long as required, limited only by the available hardware storage capacity. In the trial version, you are limited to keeping a total one day (24 hours) of recordings, regardless whether the recordings are stored in XProtect Essential's regular databases or in archives.

There are several ways in which to configure where to store archives. We highly recommend using dynamic paths for archives. With dynamic paths, you specify a number of different archiving paths, which must all be on drives on the computer running XProtect Essential. If the path containing the relevant camera's database is on one of the drives you have selected for archiving, XProtect Essential will always try to archive to that drive first. If not, XProtect Essential automatically archives to the archiving drive with the most available space at any time. This fact will have no impact on how users find and view archived recordings. Dynamic archiving paths are general for all your cameras.

To configure dynamic archiving paths: In the Management Application's navigation pane, expand *Advanced Configuration*, right-click *Cameras and Storage Information*, and select *Properties ...*, then *Dynamic Path selection – Archives*.

## Client Access, Users and Rights

Users are able to connect to your XProtect Essential surveillance system with a number of different clients. Here, we will focus on the Smart Client, Milestone's most feature-rich client (for details, see the Smart Client User's Manual available on [www.milestonesys.com](http://www.milestonesys.com)).

In the following, we will begin by configuring clients' access to the surveillance system. When that is in place, we will define the actual users and their rights.

- In the Management Application's navigation pane, expand *Advanced Configuration*, right-click *Server Access*, and select *Properties ...*
- In the *Server Access* section's *Server name* field, type a descriptive name for your XProtect Essential server (users will identify the server by this name). If required, you can change the local port used for communication between users and the XProtect Essential server (default is port 80).
- If your XProtect Essential server should be accessible from the internet through a router or firewall, select *Enable internet access* and specify the server's internet address and port. Note that the router/firewall must be configured so requests sent from clients to the internet address and port are forwarded to the local address and port of the XProtect Essential server.
- IP address ranges which should be recognized as coming from the local network can be defined in the *Local IP Ranges* section.

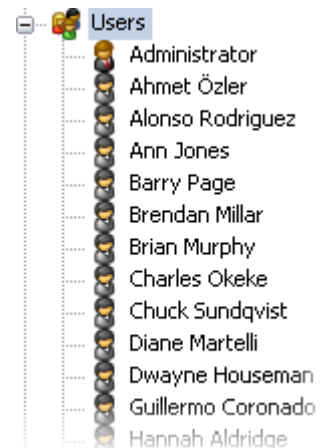
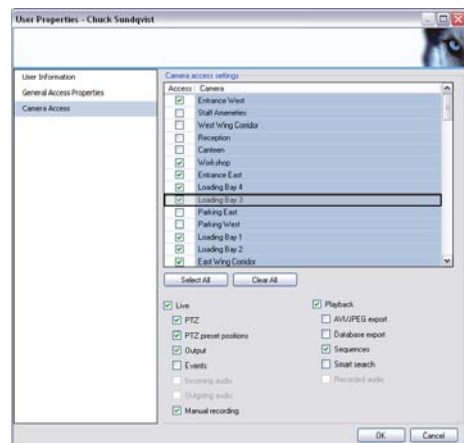


- In the *Language Support and XML Encoding* section, select the language/character set used by the XProtect Essential server and clients. This will ensure that the right language and character encoding is used in users' communication with the server.

Now that clients' access to the server is in place, we can define users and what those users are allowed to do:

- In the Management Application's navigation pane, expand *Advanced Configuration*, right-click *Users*, and select either *Add New basic User ...* or *Add New Windows User ...* Basic Users are users authenticated by a simple user name and password combination; Windows Users are users defined on the computer running XProtect Essential and authenticated by their Windows login.
- When you have added a user, the *User Properties* window opens. There you can review the user's general access settings, i.e. whether the user should be allowed to view live video, play back recorded video, configure the client through the clients *Setup* tab, etc. By default, the user has full rights, but you can limit those rights as required. When ready, select the window's *Camera Access* section.

- In the *Camera Access* section, specify which cameras the user should have access to. For each camera you are also able to give the user access to viewing live and playing back recorded video, and to individual live and playback features.



- When ready, click *OK*, and add other users as required. As you add users, they get added to the list of users in your Management

Application's navigation pane. When you have added all required users, save your configuration by clicking the *Save Configuration* button in the Management Application's toolbar.



## Getting a Client

---

A Smart Client for viewing live and recorded video is automatically installed on the XProtect Essential server. If you require more Smart Clients, for yourself or for your organization's users, you can easily download and install them from the XProtect Essential server:

- Open an Internet Explorer browser (version 6.0 or later), and connect to the IP address of the XProtect Essential server with the port number you specified when defining client access (see page 12).

Example: If the server's IP address is 123.123.123.123 and you use the default port number 80, connect to <http://123.123.123.123:80>.

- When you connect to the server, you will see a welcome page. On the welcome page, simply click the required link to get your client.



Example of a Smart Client displaying live video from several cameras. Note that a trial version of Milestone XProtect Essential allows viewing of video from a maximum of four cameras.

## *Alternative User Access Methods*

In this chapter, we have focused on access through the Smart Client. If you want to try out the somewhat less feature-rich Remote Client, you will work with Remote Clients as well. The only difference is that the Remote Client is run straight from the server, without any need for installation.

Another alternative is the PDA Client for access through a PDA handheld device. In addition to the configuration described earlier, the PDA Client requires that a PDA Server, acting as a front-end to the XProtect Essential, is installed.

For more information about these alternatives, refer to XProtect Essential's built-in help system or the manuals available on [www.milestonesys.com](http://www.milestonesys.com).



## Upgrading to a Full Version

---

If you want to upgrade your trial version to a full version, you can easily do so at any time during or after the 30-day trial period. When upgrading, you do not need to go through installation again. You can simply upgrade your existing trial version to a full version the following way:

- Purchase a license for a full version of XProtect Essential from your Milestone vendor. A list of vendors in all parts of the world is available on [www.milestonesys.com](http://www.milestonesys.com).

When you purchase a license for a full version, you will receive a Software License Code (SLC). You will use this SLC when upgrading. Your Milestone vendor may send you the SLC in an e-mail. Alternatively, they may provide you with a DVD with the full version; in which case the SLC will be printed on the enclosed product license sheet.

- Open XProtect Essential's Management Application. If the 30-day trial period has expired, you will see a message informing you that you cannot use the trial version anymore. However, you can still open the Management Application in order to upgrade; just click *OK* when you see the message.
- In the Management Application's *Help* menu, select *About ...*
- Type the Software License Code (SLC) for your full version and click *OK*.
- In the *Services* menu, select *Restart All Services*.
- You now have a full version of XProtect Essential.

## Getting Device License Keys

Note that for a full version, you must get a Device License Key (DLK) for each camera and/or video encoder used on your system. The DLKs allow you to run the cameras and/or video encoders with your full version.

If you have not already received the necessary DLKs from your Milestone vendor, do the following to get DLKs:

- Go to the Milestone website, [www.milestonesys.com](http://www.milestonesys.com), click the *Login* link, and select *Software Registration*.
- Log in to the online registration system. If you do not have a login, click the *New To The System?* link, and follow the instructions. When ready, log in using the registered e-mail address and password.

**Tip:** The DLKs will be e-mailed to the e-mail address specified in your login, so it is a good idea to use a single e-mail account for all persons who should be able to retrieve DLKs.

- If you have not yet registered your Software License Code (SLC) on the online registration system, do so by clicking the *Add SLC* link and completing the SLC registration steps before proceeding.
- When ready, click the link representing the SLC.
- For **each** device required on your system, click the *Add new MAC* link and specify the device's MAC address and a description. The MAC address is a 12 digit hexadecimal (example:



0123456789AF), referred to as a *serial number* by some manufacturers. For information about how to find the MAC address for a specific device, refer to the manual for the device in question.

For video encoder devices, specify the number of cameras to be used with the device. Note that you are allowed to install only the number of cameras listed on your license certificate/license e-mail. For example, a fully used four-port video encoder counts as four cameras even though the cameras are connected through a single device—therefore a fully used four-port video encoder will use four licenses.

- Click *Submit*. The device is added to a list of devices under the SLC in question.
- If more devices are required, click the *Add New MAC* link and repeat the process.
- When ready, click the *Get DLKs by e-mail* link to have DLKs for all the devices registered under your SLC e-mailed to you.

## ***Importing Device License Keys***

The DLKs you receive, either from your Milestone vendor or by following the process above, *can* be specified manually on your system for each device, but we recommend that you simply import all DLKs into your system in one go:

- Save the .dlk file attached to the e-mail at a location accessible by the XProtect Essential server—for example on a USB stick or on a network drive.
- Open the Management Application.
- In the Management Application's *File* menu, select *Import DLKs...*, and browse to the location at which you have saved the .dlk file.
- Select the .dlk file, and click the *Open* button.
- All DLKs are now imported into your XProtect Essential system.

Devices you have already added will automatically get their DLKs and be ready for use immediately. If you have also imported DLKs for devices which you have not yet added to your system, these devices will automatically get their DLKs when you add them to your system.

---

### **Milestone Headquarters:**

#### **Milestone Systems A/S**

Banemarksvej 50 G,  
DK-2605 Brøndby, Copenhagen, Denmark  
Tel.: +45 88 300 300  
Fax: +45 88 300 301



Milestone also has offices in Australia, Dubai (UAE), France, Germany, Italy, Japan, Singapore, Spain, United Kingdom and in the USA. See [www.milestonesys.com](http://www.milestonesys.com) for more information.