

---

# TrueView Web Report™

Manual (Windows edition)

This manual describes version 2.3 of TrueView Web Report™.

Copyright © 2010 Cognimatics

## Table of Contents

Overview .....	1
Requirements .....	2
Installation on Windows .....	3
Installation of WampServer .....	3
Configuring WampServer for use with TrueView Web Report™ .....	5
Installation of TrueView Web Report™ .....	8
Quickstart .....	13
Using TrueView Web Report™ .....	14
General information .....	14
Dictionary .....	17
Administrator module .....	19
Companies/Company .....	19
Users .....	19
Modules .....	20
Data storage and management .....	20
Access control lists .....	21
Logs .....	22
Configuration .....	22
Count data module .....	22
Count data sets .....	23
Virtual cameras .....	23
Filter groups .....	23
Formulas .....	24
Charts module .....	24
Browse charts .....	24
Application charts .....	25
Reports module .....	25
Export data .....	25
Heatmaps module .....	25
Browse heatmaps .....	26

## Overview

TrueView Web Report™ is a powerful statistical tool that works seamlessly with TrueView People Counter™, TrueView Zone Counter™ and TrueView Parking™. It transforms counting data from an unlimited portfolio of counters to a single point that is accessible over Ethernet using a standard web browser. Users can log on to TrueView Web Report™ and discover trends, patterns or, identify unusual performance. TrueView

Web Report™ lets you unveil performance problems, help you to take proper action to improve performance, enhance revenue, and increase profitability.

## Requirements

TrueView Web Report™ must be installed on a computer having at least a 2.0 GHz dual core Intel CPU, 1 GB RAM and 500 GB of available disk space. The devices that TrueView Web Report™ will collect data from are required to have access to the webserver, default port 80.

TrueView Web Report™ is operating system independent but require third party software installed on the host machine. The following software packages have to be installed on the computer:

1. PHP 5.2.4 or higher

PHP must have the following extensions installed and enabled:

- gd
- pcre
- PDO
- pdo\_mysql
- Reflection
- session
- SimpleXML
- SPL
- standard
- zlib

These extensions are default in most newer PHP installations, and will be checked when installing TrueView Web Report™.

2. MySQL 5.0 or higher

3. Apache 2.2 or higher

Examples of supported operating systems are:

- Microsoft Windows XP™
- Microsoft Windows Vista™
- Ubuntu 8.04 or higher

- Debian 5.0 or higher

Supported web browser clients are:

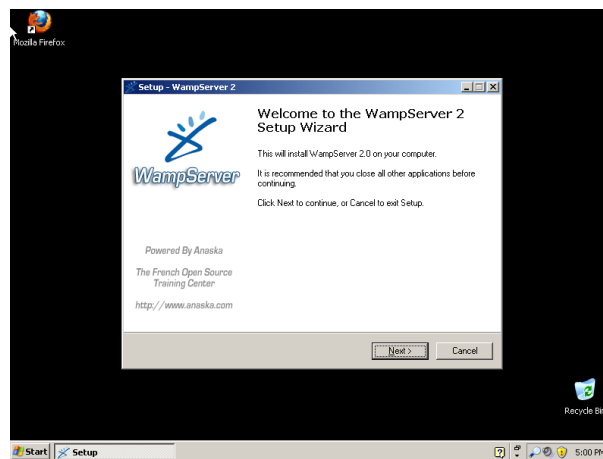
- Firefox 3.0 or higher
- Safari 4.0 or higher
- Internet Explorer 7.0 or higher

## Installation on Windows

### Installation of WampServer

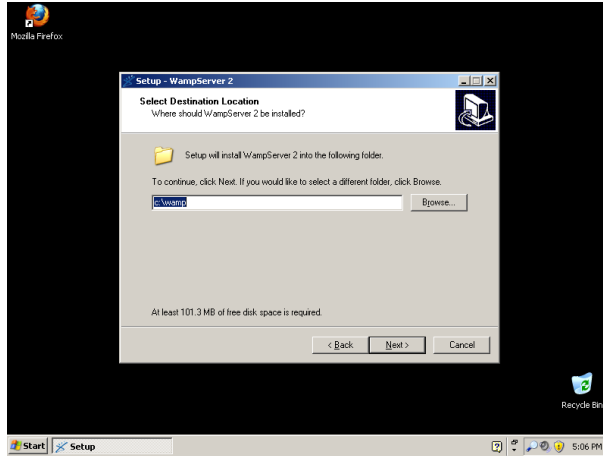
In order to get all the necessary software applications needed to run TrueView Web Report™ it is recommended to start by installing the WampServer 2.0. The package contains Apache, MySQL and PHP. The installation file of WampServer can be downloaded for free under the GPL licence from <http://www.wampserver.com/en/download.php>. Start the downloaded .exe file. When this is done something like Figure 1 will be shown.

**Figure 1. Intro screen of WampServer installation.**



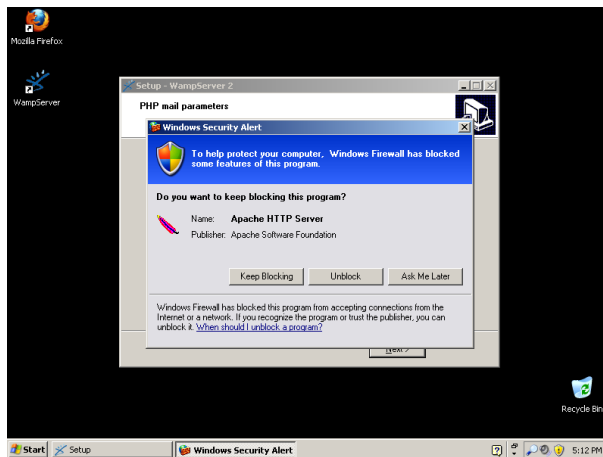
Press **Next** to proceed. **Accept the License agreement** and press **Next**.

The installation path to where WampServer will be installed is shown (see Figure 2). This can be changed but throughout this description `c : \wamp` will be used. Press **Next**.

**Figure 2. Choose WampServer path.**

It can be good to have quick access to starting WampServer so check the option "Create a Desktop icon" and press **Next**. Press **Install** and wait for WampServer to be installed.

When the installation is ready you will be prompted with a Windows Security Alert (this window might be hidden behind the WampServer installation windows, just click at in the task bar to activate it). Make sure to press **Unblock** (see Figure 3).

**Figure 3. Unblock Windows Security Alert.**

In the next step the installation will ask for SMTP mail parameters. Just press the **Next** button if you are unsure what to write in these fields. WampServer is now installed. Make sure that the check box for "Launch WampServer 2 now" is checked and click the **Finish** button (see Figure 4). WampServer is started if you can see the symbol shown in Figure 5.

**Figure 4. WampServer installation finished.**



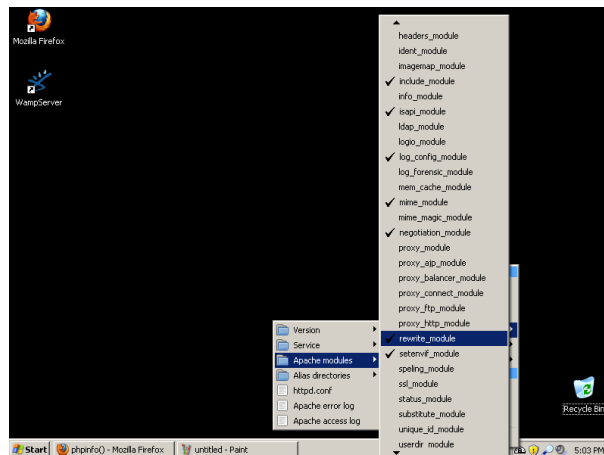
**Figure 5. WampServer is running.**



## Configuring WampServer for use with TrueView Web Report™

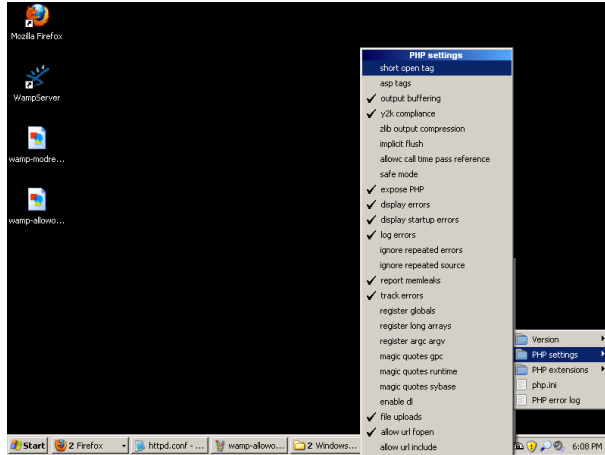
Enable the Apache module rewrite by clicking the WampServer tray icon, select Apache > Apache Modules and click on **rewrite module** (see figure Figure 6).

**Figure 6. Enable rewrite module.**



PHP must be allowed to use short open tags as well. To enable this click on the WampServer tray icon, select PHP, hover PHP settings and click on **short open tags** (see Figure 7).

**Figure 7. Enable short open tags.**

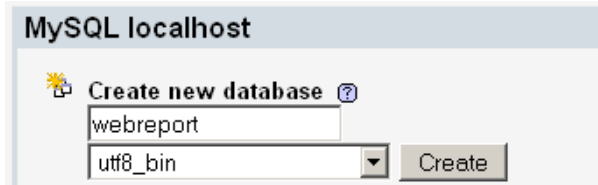


To make WampServer accessible from an external client click on the WampServer tray icon and click on the option **Put online** (see Figure 8).

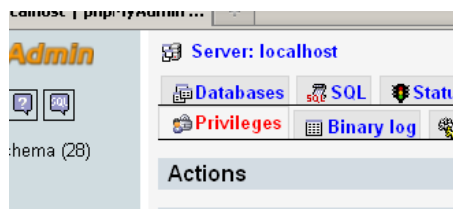
**Figure 8. Give WampServer external access.**



Now create a database for TrueView Web Report™. Go to the URL <http://localhost/phpmyadmin> and in the section **Create new database** create a new database according to Figure 9. The name webreport can be changed to anything else. Press **Create** .

**Figure 9. Create a database.**

In order to keep your database safe from the outside world, it is good to add a password to your root account in the MySQL database (WampServer defaults to blank password). You can do this directly in your browser to <http://localhost/phpmyadmin/>. To change your password, click on the **Privileges** link (see Figure 10) then click the **edit privileges icon** for the users called root (see Figure 11). On the Edit Privileges page, go to the **Change password box** (see Figure 12), then change and save the password and press the **Go** button . Do this for all users called root. Use the same password for both root users.<sup>1</sup>

**Figure 10. Privileges link in phpMyAdmin.****Figure 11. Privileges link in phpMyAdmin.**

User	Host	Password	Global privileges <sup>1</sup>	Grant
<input type="checkbox"/> Any	%	--	USAGE	No
<input type="checkbox"/> root	127.0.0.1	No	ALL PRIVILEGES	Yes
<input type="checkbox"/> root	localhost	No	ALL PRIVILEGES	Yes

[Check All / Uncheck All](#)

**Figure 12. Change password for root users in phpMyAdmin.**

This step is optional, but if you want to continue using phpMyAdmin, you need to update your password in the config file. Open `C:\wamp\apps\phpmyadmin3.x.x.x\config.inc.php` in your favorite text editor (or just Notepad) and change:

```
$cfg['Servers'][$i]['password'] = '';
```

<sup>1</sup>TrueView Web Report™ can use the MySQL root account. If you do not want that for some reasons you can create a new MySQL database and user with all privileges granted for that user.

to

```
$cfg['Servers'][$i]['password'] = 'yournewpassword';
```

Replacing yournewpassword with the password you just created with phpMyAdmin.

Now restart WampServer by clicking on its tray icon and select **Restart All Services**.

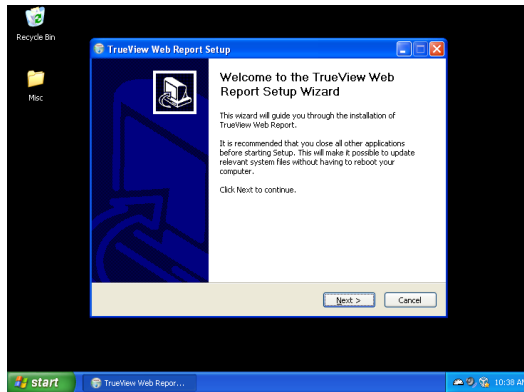
Once the WampServer is installed proceed to installation of TrueView Web Report™.

## Installation of TrueView Web Report™

With the prerequisite software installed follow these steps to continue the installation.

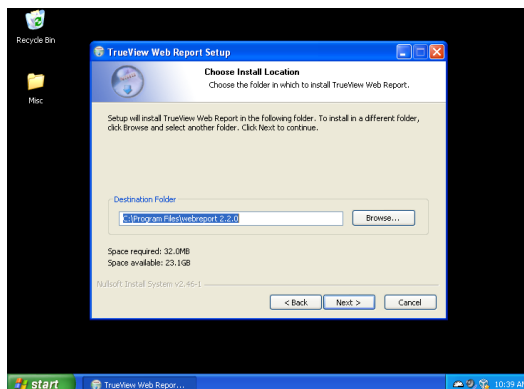
1. Open the installation file named something like webreport-2.x.x-win.exe to begin the installation. The startup screen will be shown, see Figure 13. Press **Next** to proceed.

**Figure 13. Start of TrueView Web Report™ installation.**



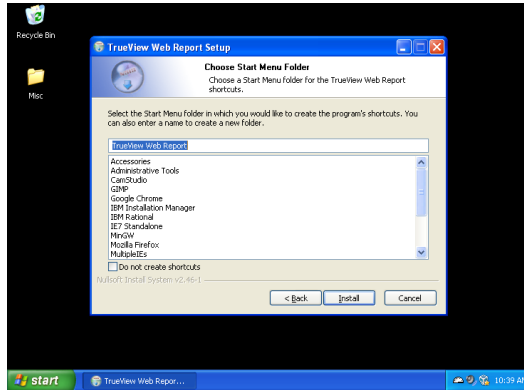
2. Read through the Licensee agreement and press **Next** to proceed.
3. In this step the directory where the files to TrueView Web Report™ should be (see Figure 14). The default is the program directory. Press **Next** to proceed.

**Figure 14. Select directory where TrueView Web Report™ should be installed.**



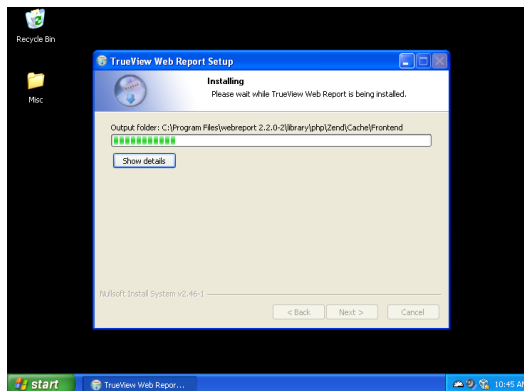
4. If its wanted, a Start Menu folder can be created (see Figure 15) . Press **Next** to proceed.

**Figure 15. Create a Start Menu folder.**



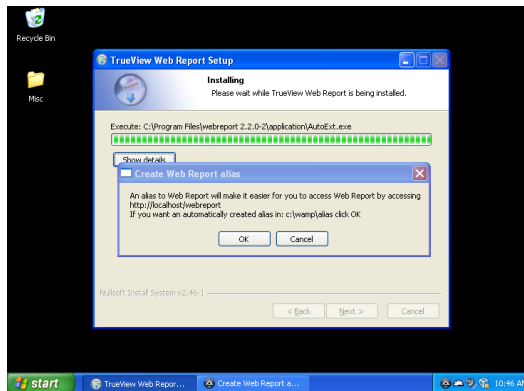
5. Now all files to TrueView Web Report™ will be installed, this can take a few minutes.

**Figure 16. Installation of files.**



6. The installer will try to find the Apache (web server) directory and prompt you with a suggestion. If it's correct press **Ok** .
7. The installer will then ask if it should create an alias for TrueView Web Report™ into the web directory for the WampServer (see Figure 17). This will mean that the users can connect to TrueView Web Report™ via the URL `http://<IP>/webreport`. It is recommended to press **Ok** .

**Figure 17. Should the installer create an alias.**



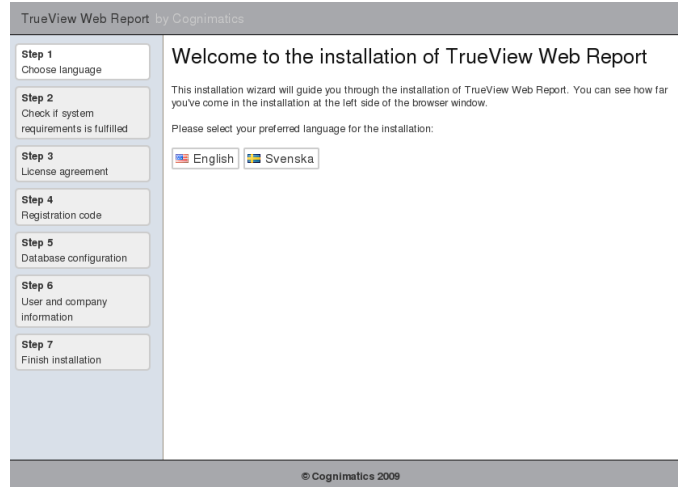
8. When all files have been installed TrueView Web Report™ make sure you restart all WampServer services via its Tray icon.
9. Make sure the web server user has write permissions to the following items
  - `./webreport/public/tmp/`
  - `./webreport/cache/`
  - `./webreport/application/config.ini`

In Windows these items are usually writable by default but this depends on which Windows version you have.

10. Go to `http://localhost/webreport/installation/` where *localhost* is replaced with the network address of TrueView Web Report™ server if accessing from another computer and *webreport* is changed to the directory that was chosen during the installation of the files.
11. If the installation of the web server is correctly done you will now see the start page of the installation of TrueView Web Report™, see figure Figure 18. To the left in the page the steps in the installation wizard is shown.

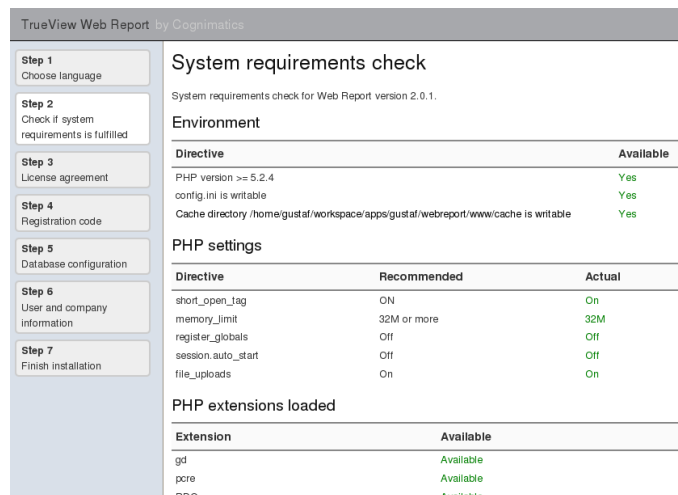
Select your preferred language.

**Figure 18. First page of TrueView Web Report™ installation.**



12. TrueView Web Report™ checks that all necessary third party software components are installation, see Figure 19. If there are any errors marked in Red, make sure to fix them before continuing with the installation.

**Figure 19. Requirements.**



13. Next step shows the TrueView Web Report™ license agreement. Read it through carefully and press **Next step** to accept.

14. To be able to use TrueView Web Report™ it must be registered with the Registration code that was included in the TrueView Web Report™ delivery. Put in the field Registration code and press **Register** (see Figure 20).

**Figure 20. Write your Registration code.**

An Installation Id will be generated that is unique for your computer and Registration code. Go to <http://face.cognimatics.com/activation> and write your registration code and installation id to activate your license. An activation code will be generated that should be given in the field Activation code in the TrueView Web Report™ installation and press **Activate** (see see Figure 21).

**Figure 21. Write your Activation code.**

15. The next step is to configure database access to TrueView Web Report™, see Figure 22. Set the options to your database and the database name you created. Make sure your database user has all privileges granted for the database.

**Figure 22. Give TrueView Web Report™ database access.**

TrueView Web Report by Cognimatics

**Step 1**  
Choose language

**Step 2**  
Check if system requirements is fulfilled

**Step 3**  
License agreement

**Step 4**  
Registration code

**Step 5**  
Database configuration

**Step 6**  
User and company information

**Step 7**  
Finish installation

**Database configuration**

Host name · localhost  
Enter the host name for your database. This is usually 'localhost'.

User name · root  
Enter the name for the database user. It must have all permissions withing the database you want to use.

Password · ●●●●●●●●  
For site security using a password for the database account is mandatory.

Database name · webreport  
Enter the database name you want TrueView Web Report to use.

**Next step**

© Cognimatics 2009

16. In the step the first company and its first user in TrueView Web Report™ is created. This user will be a multi company user (see Figure 23). Press **Next step** to continue.

**Figure 23. Create user and company.**

TrueView Web Report by Cognimatics

**Step 1**  
Choose language

**Step 2**  
Check if system requirements is fulfilled

**Step 3**  
License agreement

**Step 4**  
Registration code

**Step 5**  
Database configuration

**Step 6**  
User and company information

**Step 7**  
Finish installation

**User and company information**

**Your company**

Company name · Cognimatics

**Administrative user**

Forename · john

Surname · Doe

E-mail · john@cognimatics.com

Password · ●●●●●●●●

Confirm password · ●●●●●●●●

**Next step**

© Cognimatics 2009

17. TrueView Web Report™ is now configured. Just a few small steps left.

18. Remove the folder `./webreport/application/installation` from the system

19. Remove write permissions from `./webreport/application/config.ini`

20. Installation is completed.

## Quickstart


This section presents a step-by-step quickstart guide on how to get data from your cameras and study it. To get to know the full functionality of TrueView Web Report™ it is recommended to read through the entire manual.

In this quickstart, it is assumed that you are using TrueView People Counter™ when sending data to your TrueView Web Report™ installation. But the operation is the same for the other supported applications in the TrueView Suite™.

### 1. Log in to TrueView Web Report™

You are now ready to start using TrueView Web Report™. Start a web browser and go to <http://localhost/webreport/> where *localhost* is replaced with the network address of TrueView Web Report™ server if accessing from another computer.

### 2. Create a camera group

The data from TrueView Web Report™ must have a camera group to put its data in. To create this start by choosing  **Data storage and management** in the left menu. In the top menu choose **Add camera group**.

A form will appear where some fields are required. If you are a multi company user, make sure you select at least your company for the option Companies. Remember the User and User password values you chose. Press **Submit** when done.

### 3. Setup your TrueView People Counter™

Go to the URL of your TrueView People Counter™ and navigate to the **Settings page**. Select the section Web Report and write the URL to your TrueView Web Report™ server along with the user and password you chose in the previous step. Make sure you select version 2 as well. Note that it may take a few minutes before the data will appear in TrueView Web Report™.

### 4. Take a look at the data

When the data is in TrueView Web Report™ you can easily take a look at it by choosing **People Counter** under the Charts module to the left. If you have any data in your camera group, this will appear here.

## Using TrueView Web Report™

You are now ready to start using TrueView Web Report™. Start a web browser and go to <http://localhost/webreport/> where *localhost* is replaced with the network address of TrueView Web Report™ server if accessing from another computer.

Enter the e-mail and password that you used in the creation of your user during the installation.

**Congratulations!** You have now logged in to TrueView Web Report™ for the first time.

## General information

TrueView Web Report™ can be used for both a single company and for as several companies. The user that was created during the installation of TrueView Web Report™

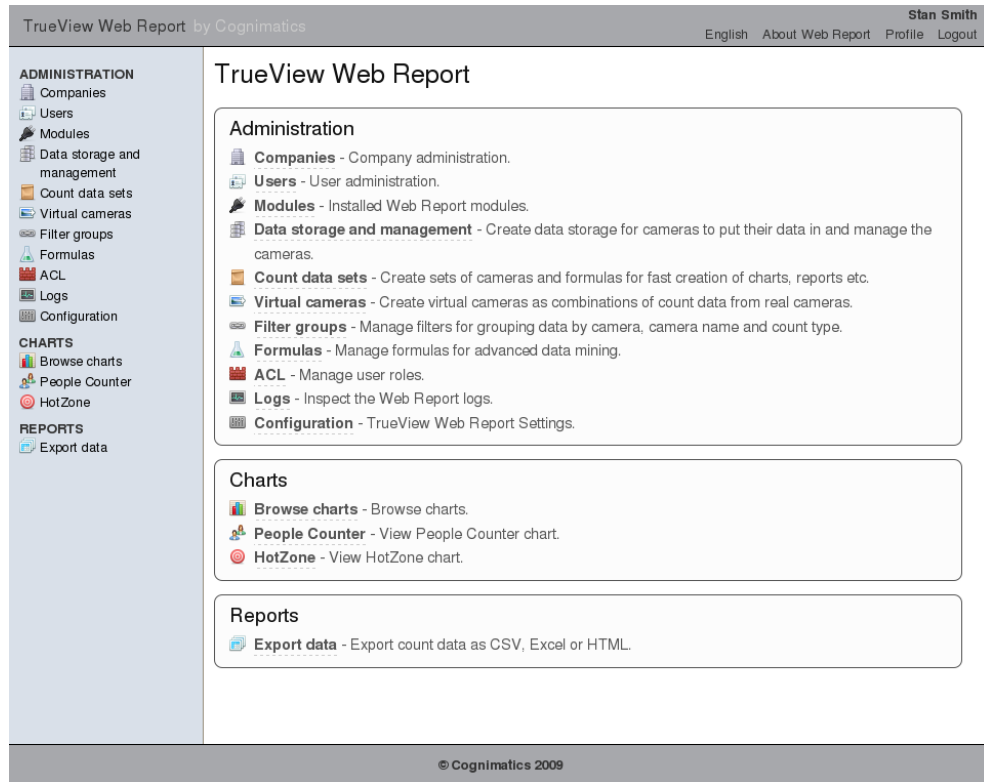
is a *multi company user* and can add, delete and manage its own as well as others companies (like adding new users etc). The multi company user will have a different view than a single company user. Screen shots in this manual will be mixed between a multi company user and a single company user.

Users can be given different levels of access to TrueView Web Report™, see the section called “Access control lists”. In this manual we will assume that the user has full access to configure TrueView Web Report™.

## First page

Every time a user log in or press the TrueView Web Report link in the page header it will be directed to the first page shown in Figure 24.

**Figure 24. First page of TrueView Web Report™**



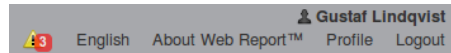
## Page header links

The page header contains a number of links that may be convenient, see Figure 25.

1. **Language choice.** Click on the link showing your current language choice to see what other languages that are available. To select another just click it. To cancel, press Escape.
2. **About Web Report.** Click the link to get information about TrueView Web Report™ and which open source projects it uses.

3. **Profile.** If you want to change your password or if you want to see info about your profile, click this link.
4. **Logout.** Click this link if you want to logout.
5. **Warnings.** When there might be something wrong with a camera you'll be notified by a warning that can be Acknowledged if it is taken care of.

**Figure 25. Page header links**



## Example of a form

Fields marked with a bullet (•) are required and active fields will often have a light yellow background, see Figure 26.

**Figure 26. Form example.**

Add count data set: Step 1

Name	• Stores
Company	• Cognimatics
TrueView application	• TrueView People Counter
Description	All stores in Sweden

## Example of a table

When data is presented it is often presented in a table. If you press a table header, the table will automatically sort the values in the column. If you want to sort several columns, press the shift key and press another column header, see Figure 27. You will notice a blue arrow pointing upwards or downwards depending on the sort order.

**Figure 27. Table example.**

Users

	Forename	Surname	↓ E-mail	Company ↑
	Annie	Anheim	annie@xyzcorp.com	Corp XYZ
	Heidi	Klum	heidi@xyzcorp.com	Corp XYZ
	Rikard	Berthilsson	boss@cognimatics.com	Cognimatics
	Stan	Smith	stan.smith@cognimatics.com	Cognimatics
	Sherlock	Watson	sherlock@cognimatics.com	Cognimatics

# Dictionary

Beneath is a dictionary which explains common terms used in the manual and in TrueView Web Report™.

## ACL

ACL is short for Access Control List and is the section in TrueView Web Report™ where roles and privileges are managed.

## Application

Every camera connected to TrueView Web Report™ should have a TrueView application installed. TrueView Web Report™ currently supports TrueView People Counter™, TrueView Zone Counter™, TrueView Parking™, TrueView Bicycle™ and TrueView Heatmap™.

## Application chart

An application chart is a chart that represents the count data from a certain application.

## Camera

Each unit that reports data to TrueView Web Report™ is called a camera.

## Camera group

A camera group is an account where cameras can store its data. A camera group has a user name and a password that are entered in respective interface for cameras containing the TrueView People Counter™, TrueView Zone Counter™, TrueView Parking™, TrueView Bicycle™ or the TrueView Heatmap™ software.

## Company

Every user belongs to a single company. For every company count data sets can be defined for the cameras to store its data in. It is also possible to share count data sets between different companies.

## Count data set

A count data set is a set of cameras, filter groups, virtual cameras and formulas which can be used when creating custom charts etc.

## Count type

Every application have count types that represents its data. For example TrueView People Counter™ has In and Out as count types.

## Custom chart

A custom chart is a chart that shows the data of a specific count data set.

## Filter group

A filter group is a way to filter out specific cameras based on the camera name or by its count type .

## Formula

A formula is an arithmetic expression of count types from cameras.

**Formula group**

A formula group is a collection of formulas.

**Log**

TrueView Web Report™ will log certain events in its logs.

**Module**

TrueView Web Report™ is based on modules. The core and admin modules are required while e.g. the chart module is an extension of TrueView Web Report™.

**Multi company user**

There exists two types of users. The first one is a single company user and the other is a multi company user. The latter is allowed to make changes for other companies while the single company user is only allowed to make changes within its own company.

**Privilege**

Every role is allowed to make certain actions (like removing a user), these actions are called privilege and every role have different privileges.

**Role**

Each user has a role which determines what privileges the user has. All companies have a set of roles.

**TrueView Bicycle™**

TrueView Bicycle™ is a product in Cognimatics' TrueView Suite™ that automatically counts the number of pedestrians and bicycles passing by under the camera.

**TrueView Heatmap™**

TrueView Heatmap™ is a product in Cognimatics' TrueView Suite™ that visualize where it is movement in the image with a heatmap.

**TrueView People Counter™**

TrueView People Counter™ is a product in Cognimatics' TrueView Suite™ that automatically counts the number of people passing by under the camera.

**TrueView Parking™**

TrueView Parking™ is a product in Cognimatics' TrueView Suite™ that automatically counts the number of vehicles passing by under the camera and can manage counting for a parking garage.

**TrueView Zone Counter™**

TrueView Zone Counter™ is a product in Cognimatics' TrueView Suite™ that automatically detects and counts the number of people standing in the area visible by the camera.

**Single company user**

There exists two types of users. The first one is a single company user and the other is a multi company user. The latter is allowed to make changes for other companies while the single company user is only allowed to make changes within its own company.

### User

Everyone who can log in to TrueView Web Report™ is a user. A user can have different privileges depending on its role.

### Virtual camera

Virtual cameras can be created for each application . A virtual camera will have the same count types as a camera for the selected application and will be a combination of data from available cameras.

## Administrator module

In order for TrueView Web Report™ to work properly some parts of the Administrator module must first be configured.

## Companies/Company

If you are a multi company user , TrueView Web Report™ lets you manage data from several companies.


### Multi company user

Choose  **Companies** to the left and then **Browse companies** at the top of the page to to see the list of the available companies.

For each item in the list you can choose between viewing, editing, and in-activating the company by clicking on the icons to the left in the list.

To add a company choose **Add Company** at the top of the page. Add all the information concerning the company. When done click on **Submit**.

### Single company user

Choose  **[Your company name]** to the left to see your company information.

To edit the company information choose **Edit company** at the top of the page. When done click on **Submit**.

## Company logo

Companies can upload a logo that will be shown in the footer. Read more about this in the configuration section.

## Users

Users can be given different roles to limit their access to the functionalities of TrueView Web Report™. When a user is created he or she will login with the e-mail and the password given in the creation step.

Choose  **Users** to the left and then **Browse users** at the top to see the list of the active users.

For each item in the list you can choose between edit user, change password for user and in-activating user by clicking on the icons to the left in the list.


To add a user choose **Add user** at the top of the page. Add all the information concerning the user. When done click on **Submit**.

To view all inactive users choose **Browse inactive users** at the top of the page.

## Modules

TrueView Web Report™ is built on modules. The following modules are included as default

1. Core
2. Administrator
3. Count data
4. Charts
5. Reports

Choose  **Modules** to the left to see what modules that are installed.

## Data storage and management

For get the data from your camera software into TrueView Web Report™, at least one camera group must be selected. When creating a camera group you need to choose a user name and a password for the group. The settings in & should also be set in the cameras belonging to the group. See the manual for respective application how this is done.

Choose  **Data storage and management** <sup>2</sup>to the left and then **Browse camera groups** at the top to see the list of available camera groups.

For each item in the list you can choose between editing, changing password, deleting and importing data to the camera group by clicking on the icons to the left in the list.

### Important

A deleted item will be permanently removed.

To import data to a camera group choose **Import .cnt file** to the left of an item. Add the address to a camera running a supported TrueView application or browse for a .cnt file on your system. The supported file format is .cnt. When done click on **Import**.

---

<sup>2</sup>This text can be changed a little depending on what privileges the current user have.

To add a camera group choose **Add camera group** at the top of the page. Add all the information concerning the group. When done click on **Submit**.

To view available cameras choose **Browse cameras** at the top of the page.

For each item in the list you can choose between viewing, editing, and deleting the camera by clicking on the icons to the left in the list.

### **Important**

A deleted item will be permanently removed. You will not be prompted to confirm the deletion.

All formulas etc that uses the deleted camera will also be deleted.


If there is two cameras that should be merged choose **Merge cameras** at the top of the page. This could be done if one camera breaks and a new TrueView People Counter™ is installed on the new camera. This camera have a different serial number than the old one and will be recognized as a new counter. This scenario can also be fixed by changing the serial number on the old camera by editing it at the Browse cameras page. To merge two cameras first select the application for the cameras you want to merge. Then select the source camera (old camera) and target camera (new camera). The default setting will interrupt the merge if there is data from the same time period on both cameras. Select a merge strategy for what data you want to use. Normal setting when conflict is to either use target or source data.

### **Important**

A merge is not reversible.

## **Access control lists**

The access control list lets you manage what access should be given to different users of TrueView Web Report™.

Choose  **ACL** to the left and then **Browse roles** at the top of the page to see the list of the available roles. A user of TrueView Web Report™ will be given one of these roles which will restrict that users privileges to the system.

For each item in the list you can choose between editing role, editing privileges, and deleting the role by clicking on the icons to the left in the list.

If you want to delete a role, make sure there exists no user with this role.

### **Important**

A deleted item will be permanently removed.

To add a role choose **Add role** at the top of the page. Add all the information concerning the new role. When done click on **Submit**. Check the boxes according to what privileges should be given to the role. When done click on **Submit**.

## Logs

TrueView Web Report™ will log application notices when certain events occur.

Choose  **Logs** to to the left and then **Browse logs** at the top of the page to see the list of the available logs.


For each item in the list you can choose between viewing the log messages or purging the log (removing all messages) by clicking on the icons to the left in the list. For fast access you can find links to the logs in the sub menu too.

### Important

A deleted item will be permanently removed.

To view a log list choose the view icon to the left of the item. Log messages can be individually deleted from the list by clicking the icon to the left of the log message in the list.

## Configuration

Choose  **Configuration** to to the left and then **View configuration** at the top of the page to see the configuration of TrueView Web Report™.

To edit the configuration choose **Edit configuration** at the top of the page. Edit the information concerning the configuration. When done click on **Submit**.

### Important

The configuration should not be changed if you are not absolutely sure about what you are doing.

## Logo

Additional logos can be shown at the login page and in the page footer for the TrueView Web Report™ interface. To change these logos click **Logo** at the top page.

At this page logos can be uploaded. Recommended sizes are stated in the interface.


Each company can override the footer logo to suit its needs.

## Count data module

The count data module is where all count data from TrueView People Counter™, TrueView Parking™, TrueView Zone Counter™ and TrueView Bicycle™ is configured for better data mining.

## Count data sets

A count data set is a collection of virtual cameras, filter groups and formulas. A count data set is a convenient way to collect a set of data for fast access when creating custom charts and suchlike.

Choose  **Count data sets** to the left and then **Browse count data sets** at the top to see the list of available count data sets.

For each item in the list you can choose between viewing, editing, and deleting the count data set by clicking on the icons to the left in the list.


### Important

A deleted item will be permanently removed.

To add a count data set choose **Add count data set** at the top of the page. Add all the information concerning the count data set. When done click on **Submit**.

## Virtual cameras

A virtual camera is a combination of count data from a set of cameras. You can use the formula editor to create data from several cameras such as for example the sum of the data from a set of cameras. This can be useful when for example several cameras are used to cover all entrances to a site and the total number of visitor should be computed. The sum will then be regarded as a single piece of data flow from a virtual camera.

Choose  **Virtual cameras** to the left and then **Browse virtual cameras** at the top to see the list of the available virtual cameras.

For each item in the list you can choose between viewing, editing, and deleting the camera by clicking on the icons to the left in the list.

### Important


A deleted item will be permanently removed.

To add a virtual camera choose **Add virtual camera** at the top of the page. Add all the information concerning the new virtual camera. When done click on **Next step**. Use the formula editor to make a formula from the existing cameras. Several arithmetic operators can be used to create a new virtual camera that for instance adds data of two cameras that are used at the same entrance. When done click on **Submit**.

## Filter groups

A filter group is a convenient way to group a set of cameras based on a few conditions like a camera's name or its count types (in or out for the People Counter). As an example assume that all cameras placed at the entrances are named in such way that all start with the word Entrance. You can then create a filter group that filters out all cameras who's

name starts with the word Entrance. The filter group will then give you fast access to these cameras when for example creating a count data set. If more cameras that starts with the name Entrance are added to & later on they will automatically be included when using the example Filter group too.

Choose  **Filter groups** to to the left and then **Browse filter groups** at the top to see the list of the available filter groups.

For each item in the list you can choose between viewing, editing, and deleting the camera by clicking on the icons to the left in the list.


### **Important**

A deleted item will be permanently removed.

To add a filter group choose **Add filter group** at the top of the page. Add all the information concerning the new filter group. When done click on **Next step** .Use the filter editor to select which cameras should be included. When done click on **Submit**.

## **Formulas**

The formula editor lets you perform advanced data mining easily and efficiently by simple drag-and-drop directly in the web browser.

Choose  **Formulas** to to the left and then **Browse formulas sets** at the top of the page to see the list of the available formulas.

For each item in the list you can choose between viewing, editing, and deleting the formula by clicking on the icons to the left in the list.

### **Important**

A deleted item will be permanently removed.

To add a formula set choose **Add formula set** at the top of the page. Add all the information concerning the new formula set. When done click on **Next step**. Use the formula editor to make a formula from the existing cameras. When done click on **Submit**.

## **Charts module**

The charts module lets you view and manage how data should be displayed.

## **Browse charts**

Choose **Browse charts** to to the left and then **Browse charts** at the top of the page to see the list of available charts.

A custom charts belongs to a count data set and will show the data in the count data set. To view a chart choose the icon to the left of the item in list. For more information about the options for a charts see the corresponding section below.

To change the time interval that is viewed in the chart, select the first and last date under **Time interval**. The time resolution can also be changed.

You can switch between line chart and column chart by changing **Chart type** .

To export the data, press the desired button (CSV, Html, Excel or Image). The **Image** button will export the current view in the chart, this can take some time but the progress can be seen in the lower left corner of the chart.

To add a custom chart choose **Add custom chart** at the top of the page. Add all the information concerning the new role. When done click on **Submit**. Check the boxes according to what privileges should be given to the role. When done click on **Submit**.

## Application charts

Under **Browse charts** in the menu to the left there are charts for every supported application, which currently are TrueView People Counter™, TrueView Zone Counter™, TrueView Parking™ and TrueView Bicycle™. The charts will present the data for each of these applications.

Application charts are similar to Custom charts with the exception that cameras and virtual cameras can be chosen while the custom charts have its data associated with a count data set.

## Reports module

### Export data

TrueView Web Report™ can export data into the formats CSV, Excel and Html.

Choose **Export data** to to the left. All cameras in your system will appear together with filter groups etc. Select the items that you want data from and format and press **Submit**.

In the next step select the desired time interval and time resolution and press **Submit** to get the exported data.

#### Note

In the current version of TrueView Web Report™, the multi company user cannot export data for any other company then his own.

## Heatmaps module

TrueView Web Report™ comes with support for TrueView Heatmap™. Cameras with TrueView Heatmap™ installed can send data to TrueView Web Report™ in the same

way as the other TrueView™ application sends data. Create a new camera group (or use an existing one) and in the web interface for TrueView Heatmap™, input the URL to the TrueView Web Report™ server, username and password. TrueView Heatmap™ will start sending data in a few minutes if everything is setup correctly.

TrueView Heatmap™ will also send still images to TrueView Web Report™ that'll be overlaid by the heatmap.

## Browse heatmaps

All available TrueView Heatmap™ cameras are shown under **Cameras**. Mark the checkbox to see the heatmaps for the corresponding camera.

### Note

The maximum number of heatmaps that can be shown at the same time is currently four.

Check **Stretch heatmaps** to stretch the values of the heatmaps so the maximum value in the image overlay will be the warmest possible (that is red for the default color scheme).

To change which day to view heatmaps select another day in the calendar. The slider under the calendar controls together with the **Time resolution** setting which time interval that'll be shown.

### Note

Microsoft Internet Explorer (version 8 and earlier) can only show downscaled heatmaps due to its bad performance. We recommend using Google Chrome or other popular browser.